



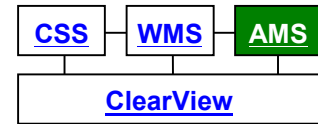
Asset Management Systems

Bridge Asset Management

Overview

The **BRAMS** program is the bridge discipline of the Huefner Asset Management System (**AMS**). It operates either as a standalone module or as part of a unique and powerful integrated system.

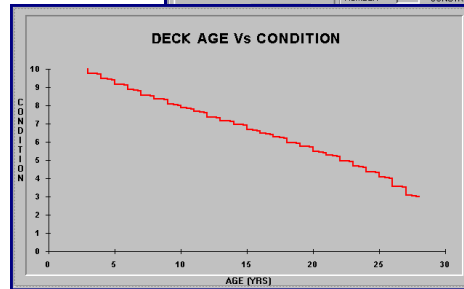
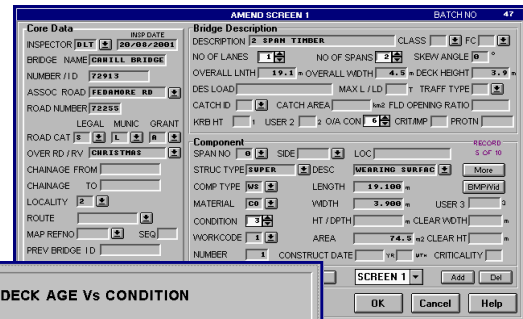
HMS Integration Model



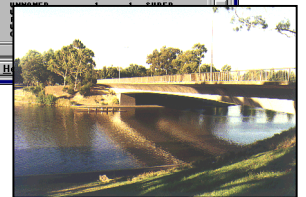
BRAMS is **specifically** designed for the management of bridge infrastructure. The program was first introduced to the marketplace in 1995 and in conjunction with the requirements of its users, has been developed and enhanced over time.

Features of BRAMS

- **Comprehensive** register for recording of :
 - Bridge name/location
 - Associated river/road
 - Bridge Classes and Use
 - Bridge Dimensions
 - Catchment data and flood protection
 - Individual bridge components:
 - Superstructure
 - Substructure
 - Footings
 - Abutments
 - User definable attributes
- Ability to record **condition** assessment information
- Fully compliant with **AAS27** and **FRS3** accounting processes relating to :
 - Current Cost
 - Written Down Current Cost (Revaluation)
 - Depreciated Cost
 - Replacement Reserve of all assets
- Intuitive and comprehensive selection system engine
- In-built **batching** system to assist data entry
- Extensive textual and graphical reports
- Generates **Age Curves** which model the degradation of assets based on age and condition
- Can be linked to **external GIS** applications such as ArcView, MapInfo and WorldViewer
- Supports single or multiple concurrent users
- Made in Australia and supported by Australian IT professionals and Engineers



BATCH NO	BRIDGE NAME	BRIDGE I/D	ASSOC ROAD	OVER ROAD/RIVER	L	SPAN NO	STRUCT TYPE
92	STEPHENS RD	72978	WEDGE CK RD	WEDGE	2	0	SUPER
106	GEORGE PHILP	76925	ARCAC AVE	LOGAN R	6	1	SUPER
106	GEORGE PHILP	76925	ARCAC AVE	LOGAN R	6	2	SUPER
106	GEORGE PHILP	76925	ARCAC AVE	LOGAN R	6	3	SUPER
106	GEORGE PHILP	76925	ARCAC AVE	LOGAN R	6	4	SUPER
106	GEORGE PHILP	76925	ARCAC AVE	LOGAN R	6	5	SUPER
106	GEORGE PHILP	76925	ARCAC AVE	LOGAN R	6	6	SUPER
164	PAYNE	75950	CUBACK LAKE	LOGAN R	5	1	SUPER
48	BURNETT BR	72918	CHINGEE CK R	CHINGEE	2	0	SUPER
50	CHINGEE	72916	CHINGEE CK R	CHINGEE CK	2	0	SUPER
101	MURRELL BR	72906	BEECHCK RD44	UNHARD	2	0	SUPER
3	THE ENRIGHT	71478	MCKEE ST	SPRING CK	1	0	SUPER
13	ALDRIDGE	72902	KERRY RD	UNHARD	1	0	SUPER
52	BROADBENT BR	72920	TORRALBA	ALBERT R	2	0	SUPER
58	BONAVAN	72929	NIND CONN RD	ALBERT R	2	0	SUPER
61	BOYLE BR	72930	KERRY RD	ALBERT R	2	0	SUPER
63	BUCK CK BR	72926	KERRY RD	BUCK	2	0	SUPER
9	FISHER	71930	KERRY RD	UNHARD	2	0	SUPER
3	FISHER	72926	KERRY RD	UNHARD	2	0	SUPER
64	FLYING FOX	78941	UPPER COOMERA	UPPER COOMERA	0	0	SUPER
120	HANPER BR	72920	HANPER BR	HANPER BR	0	0	SUPER
192	HINCHLIFFE	72927	HINCHLIFFE	HINCHLIFFE	0	0	SUPER

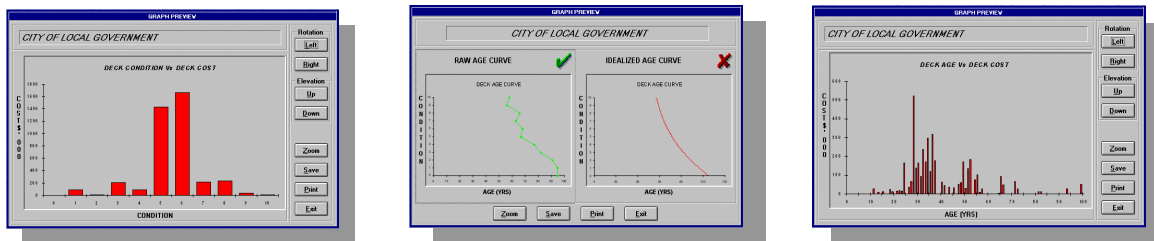




Technical Specifications

- Hardware Celeron 333MHz or higher CPU, 64MB RAM (minimum), 100 Mbit network card desirable
- Software Compatible with Windows 95 / 98 / NT / 2000 / XP
- Licenses Based on concurrent users, not per PC. Runs on standalone PC or multi-user network systems.

“What are your assets doing tomorrow?”



HMS is a Local Buy pre-qualified supplier of Asset Management software to Queensland Local Government Authorities.

Your contact in :

Australia (Head Office)

Huefner Management Systems
 6 / 59 Main North Road
 MEDINDIE GARDENS SA 5081
 (PO Box 2393, Kent Town SA 5071)
 Phone : +61 8 8342 4288
 Fax : +61 8 8342 4299
 E-mail : service@huefner.com.au
 Web : www.huefner.com.au

Australia (Queensland)

Ryan Consulting Services
 PO Box 554
 BEAUDESERT QLD 4285
 Phone : +61 7 5541 4582
 Fax : +61 7 5541 0444
 Mobile : 0408 159 392
 E-mail : ryacon@bigpond.com

New Zealand (Wellington)

Explorer Graphics Ltd
 Geographic Information Centre
 Discovery Drive, Whitby
 WELLINGTON NZ
 Phone : +64 4 234 7832
 Fax : +64 4 234 7863
 E-mail : explorer@egl.co.nz
 Web : www.egl.co.nz



Huefner
 MANAGEMENT SYSTEMS
Service through Technology