



Technical Specifications

- Hardware Celeron 333MHz or higher CPU, 64MB RAM (minimum), 100 Mbit network card desirable
 - Software Windows 95 / 98 / NT / 2000 / XP
Office 97 / 2000 / XP / 2003
 - Database SQL Server 7.0 / 2000 / 2005 or MSDE (Note: MSDE is included with product)
 - Licenses Based on concurrent users, not per PC. Runs on standalone PC, Windows network, Terminal Server or Citrix Metaframe
 - GPS NMEA and GARMIN protocol compliant GPS (Global Positioning System)
 - PDA Windows XP Tablet PC (eg HP TC1100)
- Refer to the [HMS FAQ](#) for further details

“What are your assets doing tomorrow?”

Your contact in:

Australia (Head Office)
Huefner Management Systems
6 / 59 Main North Road
MEDINDIE GARDENS SA 5081
(PO Box 2393, Kent Town SA 5071)
Phone: +61 8 8342 4288
Fax: +61 8 8342 4299
E-mail: service@huefner.com.au
Web: www.huefner.com.au

Australia (Queensland)
Ryan Consulting Services
PO Box 554
BEAUDESERT QLD 4285
Phone: +61 7 5541 4582
Fax: +61 7 5541 0444
Mobile: 0408 159 392
E-mail: ryacon@bigpond.com

New Zealand (Wellington)
Explorer Graphics Ltd
Geographic Information Centre
Discovery Drive, Whitby
WELLINGTON NZ
Phone: +64 4 234 7832
Fax: +64 4 234 7863
E-mail: explorer@egl.co.nz
Web: www.egl.co.nz



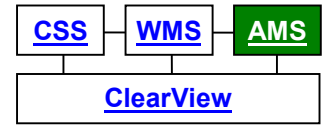
Asset Management Systems

Building Asset Management

Overview

BuildingPAK is a GIS enabled, SQL Server based Asset Management system for managing modern and historic buildings. **BuildingPAK** enables data collection staff to record the features of a building and its surroundings through an intuitive and customisable interface. **BuildingPAK** enables asset managers to define optimal asset intervention strategies and meet statutory reporting requirements using tools that allow assets to be analysed, understood, optimised, modelled and programmed.

HMS Integration Model

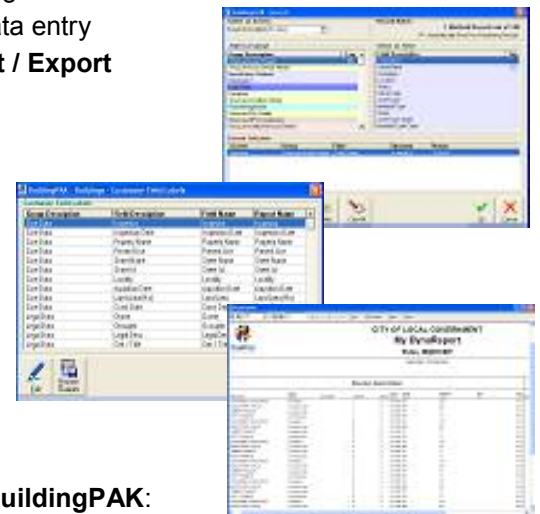
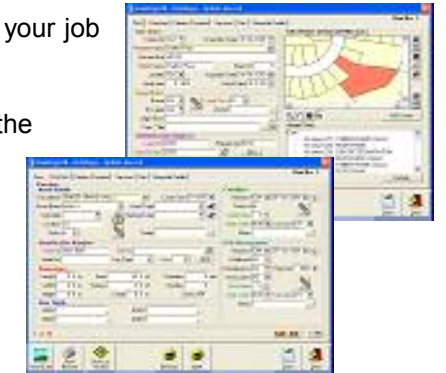


BuildingPAK operates either as a standalone module or as part of a unique and powerful [Integrated System](#).

BuildingPAK Key Features

BuildingPAK has many indispensable features that assist you to do your job better. Why look elsewhere when **BuildingPAK**:

- Uses a **customisable** relational database structure to record the following details in accordance with the International Infrastructure Management Manual:
 - Structure
 - Exterior
 - Interior
 - Services
 - Site
 - Financial Details
- Is fully compliant with **AAS27, FRS3 and GASB34** accounting processes
- Is equipped with a comprehensive **Selection System** engine
- Contains an in-built **Batching** system to assist in bulk data entry
- Contains an in-built Excel based hierarchical bulk **Import / Export Facility**
- Allows **Archives** to be made to compare historical data
- Allows you to **customise all field names and labels** and **define field formulas** to suit your requirements
- Allows you to **design your own reports** using the DynaReports Builder
- Runs on **Tablet PCs**
- Interfaces with **GPS** units



BuildingPAK Integration

BuildingPAK is dynamically linked to other software modules. **BuildingPAK**:

- Includes an integrated **GIS+Viewer** to relate geographic asset locations using ESRI Shape files or an intranet/Internet Map Server (eg ArcIMS or MapInfo WMS)
- Is dynamically linked to external GIS packages, eg MapInfo, ArcMap, WorldViewer via [GIS+Link](#)
- Provides a live asset register to the Work Management System ([WMS](#)), enabling maintenance actions to be tracked and costed to individual assets
- Data can be exported to a variety of common formats for import into finance packages

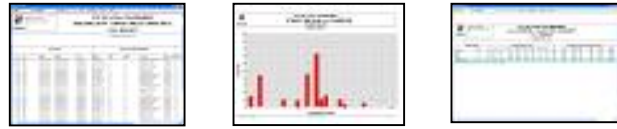


BuildingPAK Reporting Features

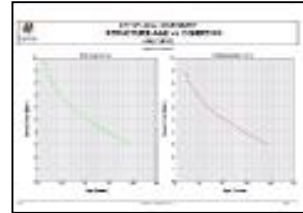
BuildingPAK's reporting features are a strong point, providing you with an almost limitless way to present your data. After all, what is the point of recording data you cannot present? **BuildingPAK's** reporting system:

- Is equipped with over **100 Reports** and **40 Graphs** in the following major categories:

- Field Data
- Building Data
- Accounting Data
- Statistical Data



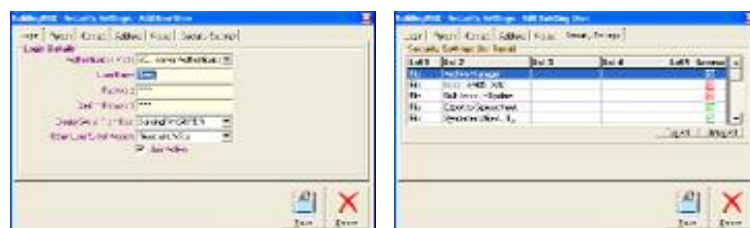
- Contains **Age Curves** which model the degradation of assets based on age and condition
- Contains an **Asset Tree** report which hierarchically presents parent-child asset relationships
- Allows you to **Save report outputs** to Adobe PDF, RTF, MS Excel, CSV and RDF formats
- Allows you to **Save report settings** to facilitate single-click report generation
- Utilises the **Selection System** engine to filter outputs by *any combination* of criteria
- Allows you to **design your own report** outputs with the in-built **DynaReports** custom report Builder. No need for Crystal Reports or complex SQL queries - **BuildingPAK does it all!**



BuildingPAK Power and Performance

BuildingPAK was designed as a full 32-bit system to take advantage of the scalability, reliability and performance that SQL Server / MSDE offers. This means that **BuildingPAK**:

- Is a true client-server application that offers rapid data access and reporting performance regardless of volume of data or concurrent users
- Can record an (effectively) unlimited number of assets without the headaches that come from low-performance file based systems developed using Access, FoxPro or Excel. You won't experience index corruption, deleted files or drive mapping restrictions with **BuildingPAK**
- Users can be set up with their own user name and password and security applied to the individual menu item level allowing Administrators to customise access organisation wide
- Supports both SQL Server and Windows (NT) authenticated logins
- Data can be replicated to a standby server and can be easily backed up to disk or tape by scheduled process.



BuildingPAK Benefits to Your Organisation

BuildingPAK was designed and developed in Australia and is supported by a team of Local Government engineers and IT professionals. The system offers your organisation many benefits, providing you with:

- A register of all building components and assets
- An effective mechanism to manage risk and demonstrate reasonable care
- A tool to budget maintenance and replacement programs
- An easy means to meet AAS27 / FRS3 / GASB34 asset valuation requirements
- The ability to model asset lifecycle behaviour
- A system that, when linked to the **HMS Work Management System (WMS)**, or Contract Management System (**CMS**), is a powerful means to track and cost all maintenance activities
- Comprehensive PDF-based documentation describing system operation and data recording definitions
- Support from a team with 20 years experience in delivering Local Government management solutions



BuildingPAK is Affordable

BuildingPAK is affordably priced and does not sacrifice quality or features so don't waste time and money with low-performance programs that are cumbersome and unreliable when you can discover the way asset management *should be*.

Contact our office for an obligation-free quotation:

Phone : 08 8342 4288
E-mail : service@huefner.com.au

HMS also offers cost effective data translation and training [services](#) and can help you achieve your organisation's goals.

30-Day Evaluation Version

BuildingPAK is available to *download* as a 30-day evaluation version. Whether you are a Property and Buildings Manager, Building Maintenance Manager or Asset Management Coordinator, fill in our **BuildingPAK download form** to receive your copy today!

To purchase your **BuildingPAK** program, forward your Order to **HMS**. Once received, an activation code will be sent to you so that your demo version will become a full version. A CD will also be shipped to you, together with paper copies of the manuals.