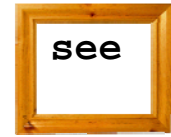




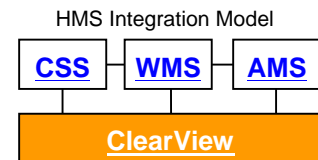
ClearView



A picture is worth 1000 words; can you see what your data is telling you?



ClearView is a window to information stored in geographical and textual databases. Managers, Asset Management and Technical users can all make more informed decisions at their own desktop as they are provided with simultaneous geographical, graphical and textual views of their data.



ClearView has been designed as a data-mining tool that enables historical comparisons to be made, statistics viewed and trends analysed. The system presents a plethora of varying detail available within just a few mouse clicks! What *differentiates ClearView* from other tools is that is able to present data over a *period of time* that is completely user-definable.

The uses of **ClearView** are almost limitless. For example, **ClearView** can display:

- The location of different types of sewer mains by construction date
- The type and location of Customer Requests over time
- The condition of road seals by construction date
- The location of pothole patching performed in a financial year



ClearView Key Features

- Data is presented *simultaneously* in Geographical, multi-format Graphical and Textual views
- *Live* interrogation of **CSS**, **WMS** and **AMS** data
- *Live links* to other enterprise wide databases, ie Property, Rates, Records Management by the creation of simple inter-connectors
- *Static* and *Dynamic* (Time Based) reporting on user definable criteria
- Export high-resolution data to incorporate directly into standard desktop applications
- Save complete views for later use
- *Drill down* on Geographical and Textual data
- Fully featured multiple layer map display engine
- Intuitive and comprehensive in-built Selection System engine
- Supports single or multiple concurrent users
- Does not write to databases – original data integrity is not compromised

Benefits to your Organisation

- Easy to use *Wizard* allows management to produce their own reports without bothering technical resources
- Intuitive, easy to learn user interface – *no training required*
- Allows Standard Reports to be shared with other users, facilitating “single click” report generation
- Print correlating Geographical, Graphical and Textual reports
- Designed for users not familiar with GIS but with features to keep the power GIS user satisfied



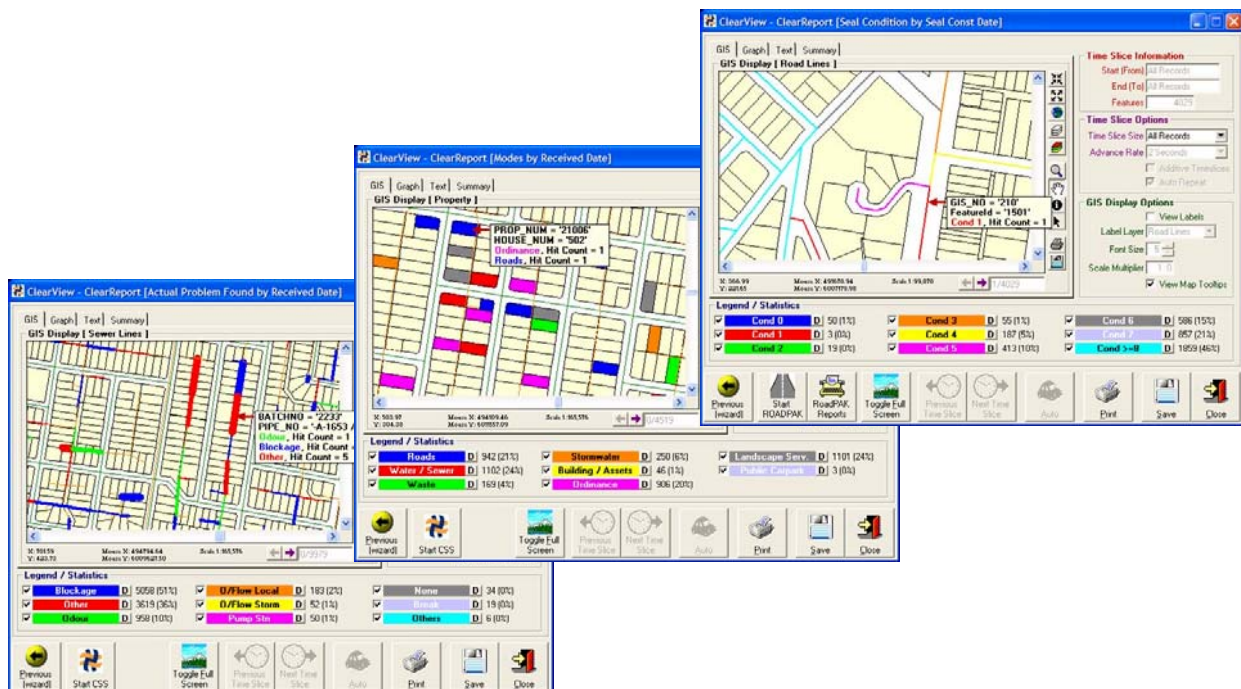
How it Works

ClearView uses a robust client-server model and powerful in-built processing engine that eradicates the need for additional software products or translation databases. The software is supplied with everything required to instantly communicate with your **HMS** modules and is equipped with tools to allow you to customise connectors to other corporate SQL Server, Excel or dBASE IV format databases. Alternately, **ClearView** can seamlessly call an external EXE file or stored procedure to process information.

ClearView utilises ESRI Shape (SHP) files for map data. Most other GIS formats are supported through conversion to SHP files. Some minor customisation (ie an inter-connector) may be required to interrogate certain databases.

Technical Specifications

| | |
|------------------|---|
| Hardware | Celeron 366MHz or higher CPU, 128MB RAM (min), 100 Mbit network card and 3D graphics card desirable |
| Software | Compatible with Windows 95 / 98 / NT / 2000 / XP MSDE or SQL Server 7.0 / SQL Server 2000 / 2005 |
| Inter-connectors | Available for SQL Server, Oracle, XLS, DBF, CSV. Other formats in consultation with HMS . |



Your contact in :

Australia (Head Office)

Huefner Management Systems
6 / 59 Main North Road
MEDINDIE GARDENS SA 5081
(PO Box 2393, Kent Town SA 5071)
Phone : +61 8 8342 4288
Fax : +61 8 8342 4299
E-mail : service@huefner.com.au
Web : www.huefner.com.au

Australia (Queensland)

Ryan Consulting Services
PO Box 554
BEAUDESERT QLD 4285
Phone : +61 7 5541 4582
Fax : +61 7 5541 0444
Mobile : 0408 159 392
E-mail : ryacon@bigpond.com

New Zealand (Wellington)

Explorer Graphics Ltd
Geographic Information Centre
Discovery Drive, Whitby
WELLINGTON NZ
Phone : +64 4 234 7832
Fax : +64 4 234 7863
E-mail : explorer@egl.co.nz
Web : www.egl.co.nz

