

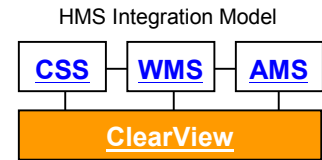


ClearView

A Window to Road Asset Information

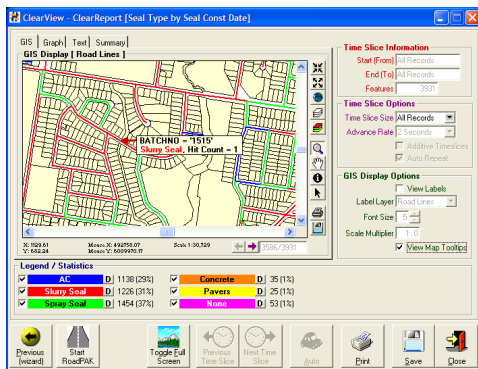
Overview

ClearView is a window to information stored within Geographical and Textual databases. It facilitates the combination of Geographical and Textual databases into a single reportable data set.

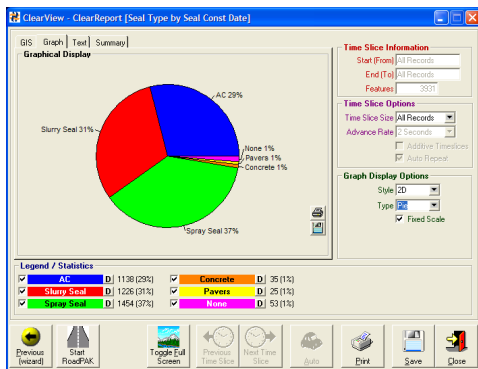


The Process

The following series of slides describe the various outputs of **ClearView** by interrogating Seal Type information from the **HMS Road Asset Management System (RoadPAK)** database.



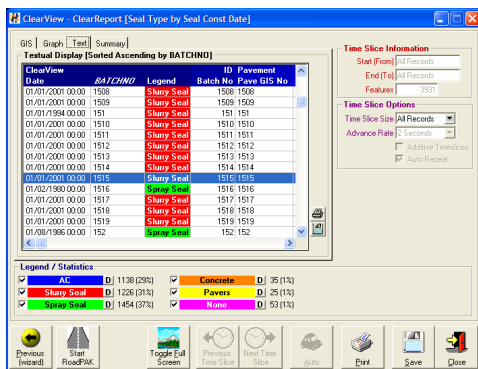
This slide details the main **ClearView** report screen and the GIS tab. In this example road sections are coloured in accordance with their Seal Type. Statistics are shown against each seal type in the Legend / Statistics panel. The right hand side of screen describes parameters relating to time slices. "All Records" are currently shown but alternately we could dynamically advance through each of the records based on their Construction Date or Survey Date. A high quality bitmap of the map can be saved and incorporated into other documents.



This slide details the Graph tab. Various graphing options are presented on the right hand side.

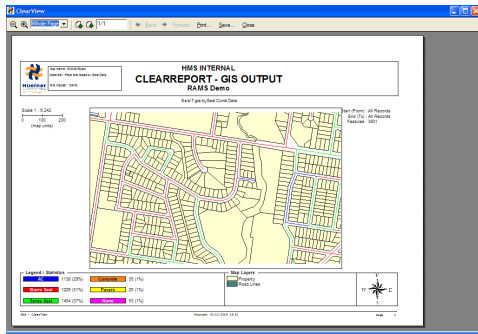
Choices between 3D and 2D versions of point, line, bar and pie charts are available.

A high quality bitmap of this graph can be saved and incorporated into other documents.



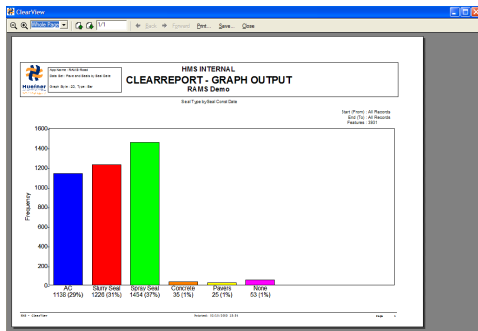
This slide details the Text tab. Here actual details from **RoadPAK** are presented including Street Name, Street Number, Length, Condition, Replacement Cost, etc. **RoadPAK** can be started via the Start **RoadPAK** button. The data on this tab can be exported to CSV or Excel format for incorporation in other documents.

Each of the tabs can be switched between at any time. By selecting a coloured feature on the map its corresponding textual record is highlighted on the Text tab, and vice-versa.



This slide details a printed GIS report. The Legend / Statistics panel is shown at the bottom with details relating to map layers displayed.

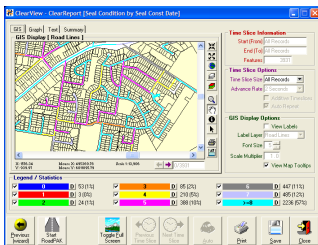
This report is able to be printed and saved in a variety of formats.



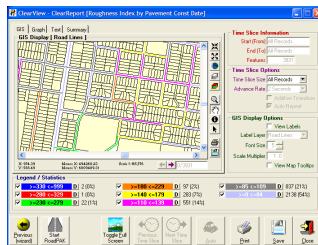
This slide details a printed graphical report. Various choices relating to graph styles and types are available.

The user is able to define the titles on a GIS, graphical and textual report. Standard report settings can be saved for subsequent single-click report generation.

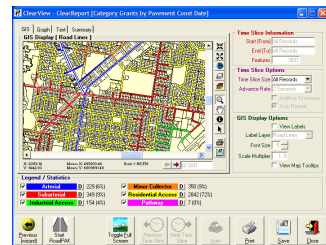
The strength of **ClearView** is that it is able to interrogate virtually any database (**HMS** or otherwise) that can be related to a GIS layer. A time-frame can be used to create dynamic reports that may reflect historical data or future projections. In relation to the **RoadPAK** database, **ClearView** can be used to examine Seal Types, Pavement Types, Seal Conditions, Pavement Conditions, Roughness, Traffic Volume, Seal Width, Pavement Width, and any other user definable criteria.



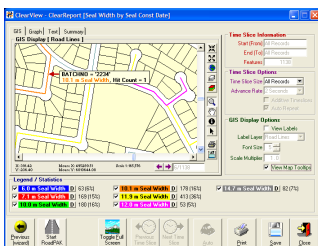
Seal Condition



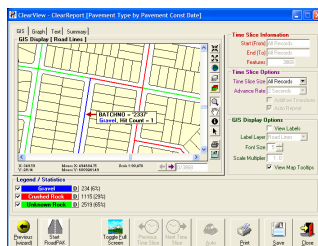
Roughness Index



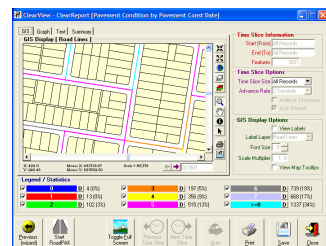
Grants Commission Information



Seal Width



Pavement Type



Pavement Condition

Your contact in :

Australia (Head Office)
 Huefner Management Systems
 6 / 59 Main North Road
 MEDINDIE GARDENS SA 5081
 (PO Box 2393, Kent Town SA 5071)
 Phone : +61 8 8342 4288
 Fax : +61 8 8342 4299
 E-mail : service@huefner.com.au
 Web : www.huefner.com.au

Australia (Queensland)
 Ryan Consulting Services
 PO Box 554
 BEAUDESERT QLD 4285
 Phone : +61 7 5541 4582
 Fax : +61 7 5541 0444
 Mobile : 0408 159 392
 E-mail : ryacon@bigpond.com

New Zealand (Wellington)
 Explorer Graphics Ltd
 Geographic Information Centre
 Discovery Drive, Whitby
 WELLINGTON NZ
 Phone : +64 4 234 7832
 Fax : +64 4 234 7863
 E-mail : explorer@egl.co.nz
 Web : www.egl.co.nz



Huefner
 MANAGEMENT SYSTEMS
 Service through Technology