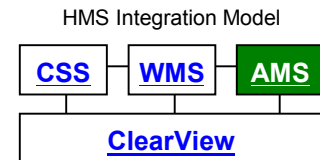




## Asset Management Systems

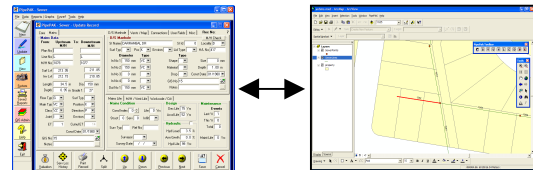
### The Dynamic GIS Connection for ESRI ArcView/ArcMap

By combining the strength of the detailed asset register, comprehensive reporting and modelling facilities within the **HMS** Asset Management Systems with an external GIS application, a seamless integration between textual and geographical data can be achieved.



**HMS** has successfully achieved this integration with a product called **GIS+Link AV**.

The **GIS+Link AV** interface is designed specifically for organisations using the ESRI suite of GIS tools, that have limited resources in GIS and/or asset management areas. It enables the user to maximise their efficiency by allowing them to tailor work practices to suit the task at hand.



### Features

- Allows your **HMS AMS** to share information in *real-time directly* with your GIS application
- Facilitates rapid creation and editing of geographical and textual asset data
- Specifically designed for organisations with limited resources, enabling users to create their own work flow processes
- *Low cost* yet powerful integration between your **AMS** and GIS
- One or more assets can be displayed in your GIS application based on any selection of **AMS** data
- Ability to create New records, or Update, View or Delete existing **AMS** records based on the selection of one or more assets in your GIS application
- Allows a standardised GIS application to be used enterprise wide
- GIS applications can be upgraded, modified or replaced without affecting **AMS** data or compromising the integration between the two
- No additional GIS training is required
- Utilises the powerful features of **AMS** and GIS applications

### How it works

The **GIS+Link** extension uses DDE (Dynamic Data Exchange) to communicate with the external GIS application. Some customisation may be required to communicate to your GIS application.

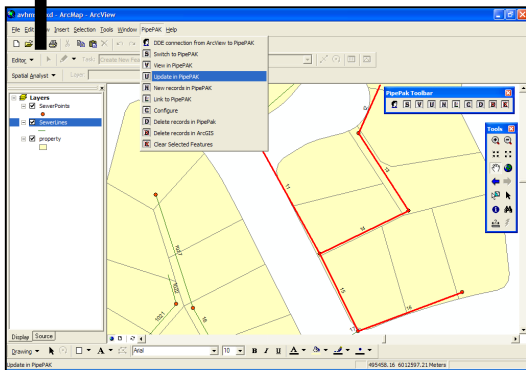
### Technical Specifications

*Hardware: Celeron 366MHz or higher CPU, 128MB RAM (min), 100 Mbit network card & 3D graphics card desirable*  
*Software: ArcView 3.2 or ArcMap 8.3, Windows 95 / 98 / NT / 2000 / XP, MSDE or SQL Server 7.0 / 2000*



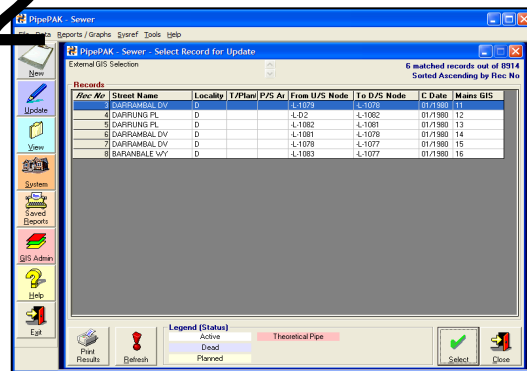
# Flow Process

1



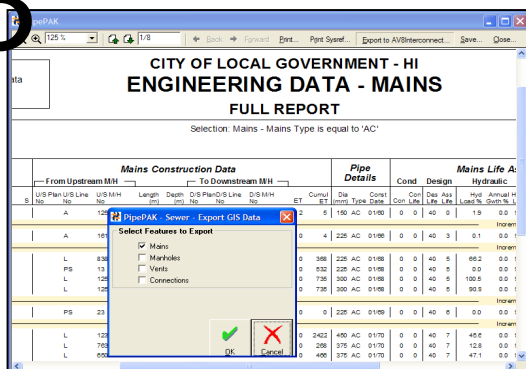
Six pipe sections are selected in ArcMap. Update in PipePAK is chosen from the PipePAK menu.

2



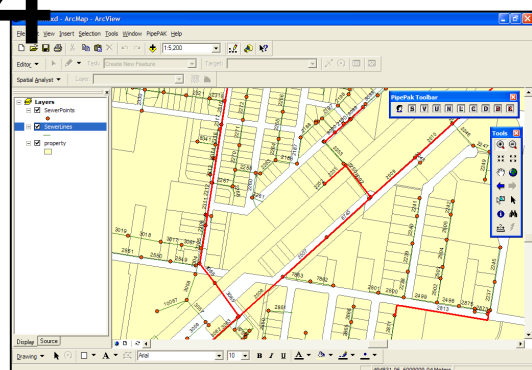
Focus is automatically switched to PipePAK. Six records are opened for updating based on the selection in ArcMap. The user can then drill-down on these records to modify them.

3



A report showing all 'AC' pipes is generated in PipePAK. Export to AV8 Interconnect is chosen from the toolbar, 'Mains' is selected and the OK button clicked.

4



Focus is automatically switched to ArcMap. All 'AC' Mains are highlighted on the map for subsequent review or editing.

Your contact in :

**Australia (Head Office)**  
 Huefner Management Systems  
 6 / 59 Main North Road  
 MEDINDIE GARDENS SA 5081  
 (PO Box 2393, Kent Town SA 5071)  
 Phone : +61 8 8342 4288  
 Fax : +61 8 8342 4299  
 E-mail : service@huefner.com.au  
 Web : www.huefner.com.au

**Australia (Queensland)**  
 Ryan Consulting Services  
 PO Box 554  
 BEAUDESERT QLD 4285  
 Phone : +61 7 5541 4582  
 Fax : +61 7 5541 0444  
 Mobile : 0408 159 392  
 E-mail : ryacon@bigpond.com

**New Zealand (Wellington)**  
 Explorer Graphics Ltd  
 Geographic Information Centre  
 Discovery Drive, Whitby  
 WELLINGTON NZ  
 Phone : +64 4 234 7832  
 Fax : +64 4 234 7863  
 E-mail : explorer@egl.co.nz  
 Web : www.egl.co.nz

