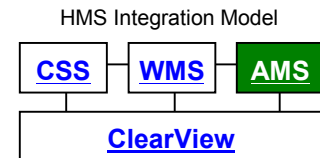




## Asset Management Systems

### The Dynamic GIS Connection for MapInfo

By combining the strength of the detailed asset register, comprehensive reporting and modelling facilities within the **HMS** Asset Management Systems with an external GIS application, a seamless integration between textual and geographical data can be achieved.



**HMS** has successfully achieved this integration with a product called **GIS+Link MI**.

The **GIS+Link MI** interface is designed specifically for organisations using MapInfo that have limited resources in GIS and/or asset management areas. It enables the user to maximise their efficiency by allowing them to tailor work practices to suit the task at hand.



### Features

- Allows your **HMS AMS** to share information in *real-time directly* with your GIS application
- Facilitates rapid creation and editing of geographical and textual asset data
- Specifically designed for organisations with limited resources, enabling users to create their own work flow processes
- *Low cost* yet powerful integration between your **AMS** and GIS
- One or more assets can be displayed in your GIS application based on any selection of **AMS** data
- Ability to create New records, or Update, View or Delete existing **AMS** records based on the selection of one or more assets in your GIS application
- Allows a standardised GIS application to be used enterprise wide
- GIS applications can be upgraded, modified or replaced without affecting **AMS** data or compromising the integration between the two
- No additional GIS training is required
- Utilises the powerful features of **AMS** and GIS applications

### How it works

The **GIS+Link** extension uses DDE (Dynamic Data Exchange) to communicate with the external GIS application. Some customisation may be required to communicate to your GIS application.

Interfaces to ESRI and GenaMap GIS products are also available.

### Technical Specifications

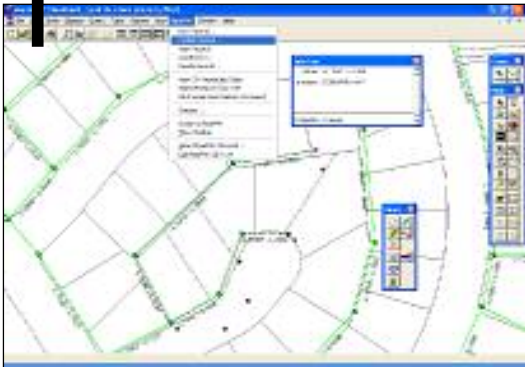
*Hardware: Celeron 366MHz or higher CPU, 128MB RAM (min), 100 Mbit network card & 3D graphics card desirable*

*Software: MapInfo 7.0 (or later), Windows 95 / 98 / NT / 2000 / XP, MSDE or SQL Server 7.0 / 2000*



**Flow Process**

1



Six pipe sections are selected in MapInfo. Update Record is chosen from the **PipePAK** menu.

2



Focus is automatically switched to **PipePAK**. Six records are opened for updating based on the selection in MapInfo. The user can then drill-down on these records to modify them.

3



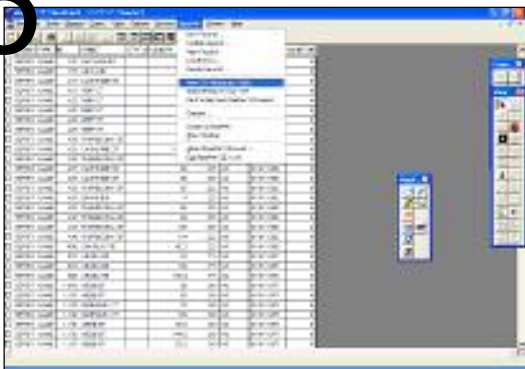
A report showing all 'AC' pipes is generated in **PipePAK**. Export to MapInfo is chosen from the toolbar, 'Mains' is selected and the OK button clicked.

4



Focus is automatically switched to MapInfo. All 'AC' Mains are coloured on the map in a user-definable colour and style.

5



View CSV Attribute Table is chosen from the menu in MapInfo. This shows base **PipePAK** attributes for the assets exported to MapInfo in Step 3.

Your contact in :

**Australia (Head Office)**

Huefner Management Systems  
 6 / 59 Main North Road  
 MEDINDIE GARDENS SA 5081  
 (PO Box 2393, Kent Town SA 5071)  
 Phone : +61 8 8342 4288  
 Fax : +61 8 8342 4299  
 E-mail : [service@huefner.com.au](mailto:service@huefner.com.au)  
 Web : [www.huefner.com.au](http://www.huefner.com.au)

**Australia (Queensland)**

Ryan Consulting Services  
 PO Box 554  
 BEAUDESERT QLD 4285  
 Phone : +61 7 5541 4582  
 Fax : +61 7 5541 0444  
 Mobile : 0408 159 392  
 E-mail : [ryacon@bigpond.com](mailto:ryacon@bigpond.com)

**New Zealand (Wellington)**

Explorer Graphics Ltd  
 Geographic Information Centre  
 Discovery Drive, Whitby  
 WELLINGTON NZ  
 Phone : +64 4 234 7832  
 Fax : +64 4 234 7863  
 E-mail : [explorer@egl.co.nz](mailto:explorer@egl.co.nz)  
 Web : [www.egl.co.nz](http://www.egl.co.nz)

